



**EDDYVILLE**  
RACEWAY PARK

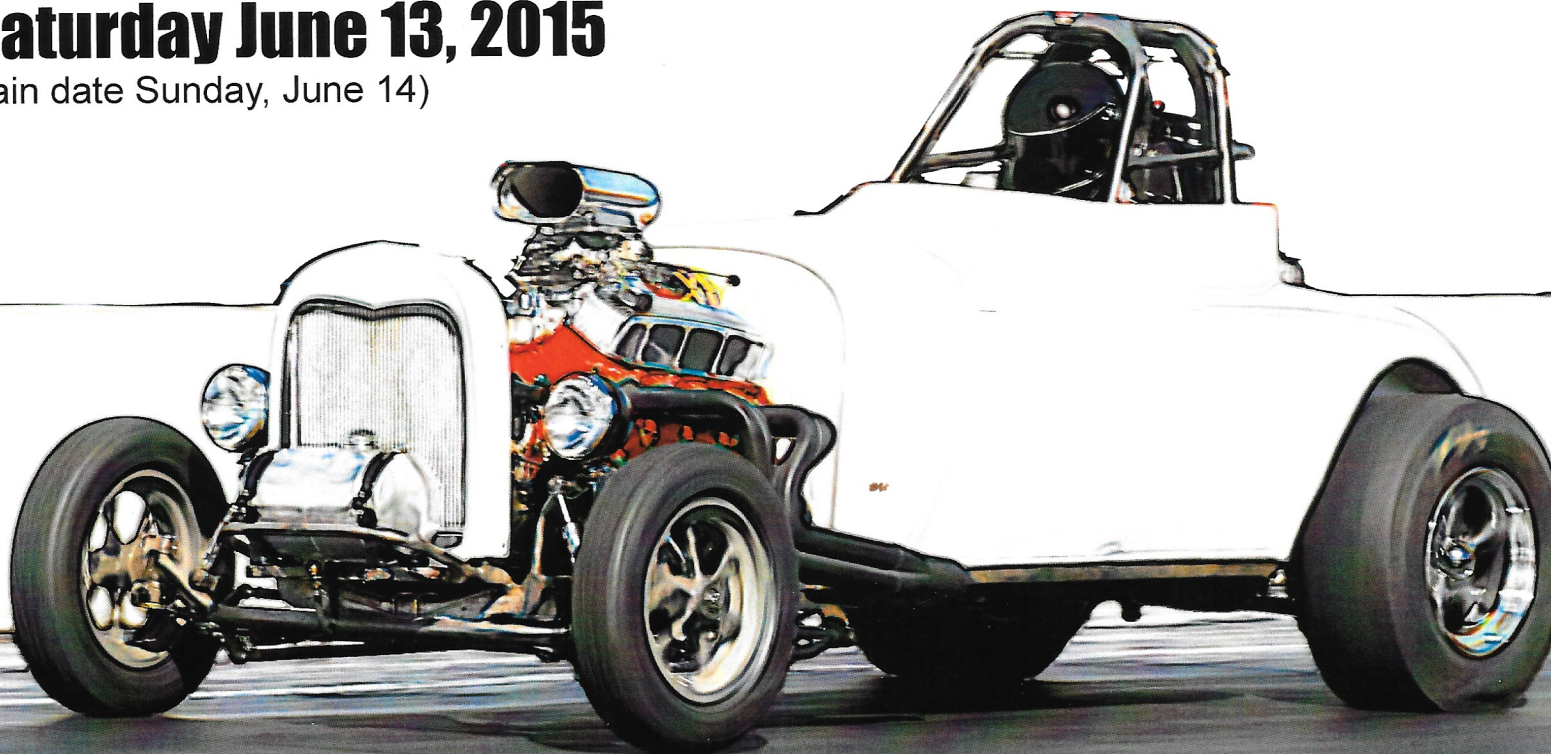
# MIDWEST NOSTALGIA NATIONALS

**WHAT?** Nostalgia drag racing event for 1975 and earlier door cars, altered, front engine dragsters, vintage drag bikes. Swap meet, car show and cruise celebrating Eddyville Raceway's 50<sup>th</sup> anniversary.

**WHEN?** Friday June 12 & Saturday June 13, 2015  
(rain date Sunday, June 14)

## FEATURED DRAG RACE VEHICLES AND CLASSES:

- ★ Nostalgia Super Stock Association
- ★ Nostalgia Gasser Association
- ★ Fuel Altered Match Race  
(*Nitro Madness vs Bad Attitude*)
- ★ Front Engine A/F Dragster  
Match Race
- ★ Nostalgia Alcohol F/C Match Race
- ★ Nostalgia Pro Stocks





- ★ **Sportsman drag race classes:** All cars must pass basic tech, those that won't pass can display their vehicles or make easy passes with them. Must be 1975 and older, no delay boxes or electronic throttle stops
- ★ Open test and tune available all day for only \$25
- ★ **Money bracket classes:**
  - # 1 Quick 16, Winner: Plaque & \$1000, R.U. \$400, Semi's \$200
  - # 2 All cars 6.99 and quicker, Plaque to winner & 80% Payback
  - # 3 All cars 7.00 and slower, (No trans brakes or 2 steps) Plaque to win & 80% payback
  - # 4 Consi class: for all 1<sup>st</sup> rd. non winners in above 3 classes, 80 % payback
- ★ **Trophy classes:** (No electronics such as trans brakes and 2 steps allowed)
  - # 1 '48 and older
  - # 2 '49 to '59
  - # 3 '60 to '75
- ★ **Car show:** Multiple car clubs involved with each club doing a trophy to their choice. Car show entry free with spectator admission
- ★ **Cruise to Eddyville:** Organized cruise to Eddyville BP convenience store and back on Friday night at 7pm
- ★ **Gates Open:** Friday at 5.30 open test and tune 6.30 - 9.30
- ★ **Gates Open:** Sat. At 7am for parking, swap meet, and car show. On track at 10am
- ★ **Spectator Admission:** Adults, Fri. \$8.00, Sat. \$15.00, Two day \$20.00  
Kids 6-12 Friday \$3.00, Saturday \$5.00, under 6 free
- ★ **Swap Meet Vendor Cost:** \$25.00 - \$35.00 depending on size of space needed
- ★ **Racer Entry Fees:**
  - Test and Tune Friday or Saturday \$25
  - Trophy classes \$30
  - Money classes # 2 & 3: \$50
  - Quick 16: \$75
  - Consi class: \$20



3260 Merino Avenue • Oskaloosa, IA • 641-969-5596

For more information contact: Gerald Kramer • 641-780-3534 • [www.eddyvillraceway.com](http://www.eddyvillraceway.com)